

CTRW229 Straight Angle Rectangular Waveguide to Coaxial Adapter 3.3 – 4.9 GHz WR229 to SMA Female

Attributes

Electrical Specification

Adapter Type	Right Angel
Adapter Grade	Standard
Frequency Band	S & C
Waveguide Type	Rectangular
Waveguide Size EI WR	WR229
Min. Frequency (GHz)	3.3
Max. Frequency (GHz)	4.9
VSWR Max	1.27
VSWR Min	1
Impedance (Ω)	50
Max. Insertion Loss (dB)	0.27
Min. Insertion Loss (dB)	0.21

Interface

Flange Style	Square
Connector	SMA
Connector Type	Female

Mechanical Specification

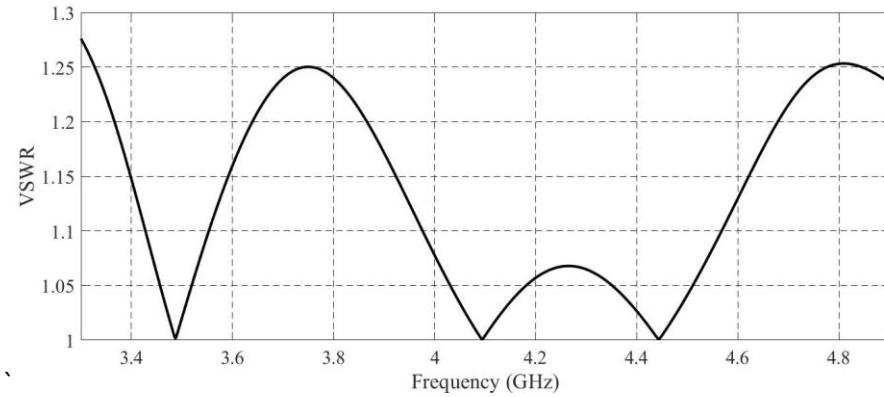
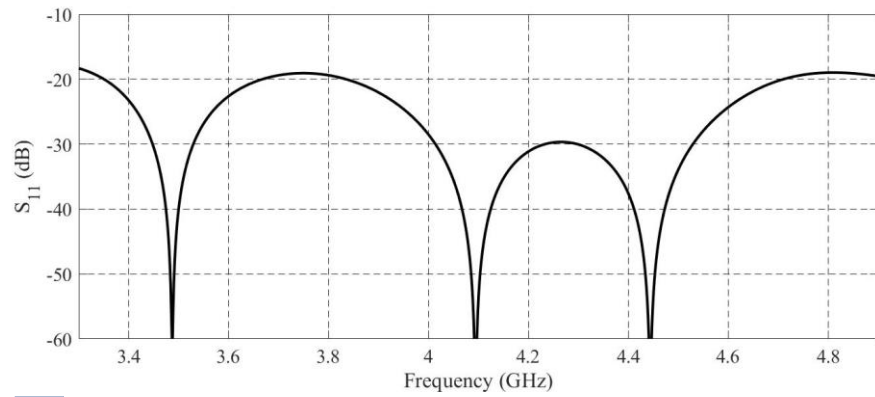
Body Material	Al
Finishing	Gray Paint
Operating Temp Low($^{\circ}$ c)	-50
Operating Temp High($^{\circ}$ c)	80



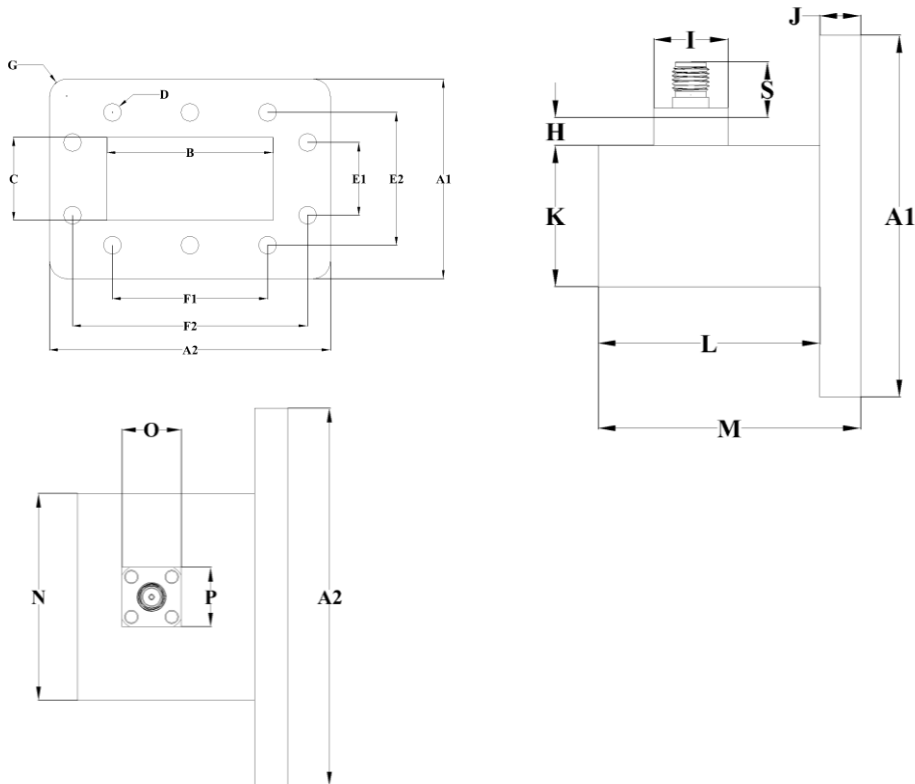
Overview

Right angle rectangular waveguide to coaxial adapter CTRW229, operating from 3.3 to 4.9 GHz with a 0.25dB insertion loss and low VSWR 1.27. CTRW229 can be an efficient transition between the rectangular waveguide WR229 and coaxial SMA female connector. It can handle 50W continuously and 3KW peak power. The flange of waveguide WR229 is FDP40 (UBR40). These waveguide to coaxial adapters is consistent with the CACIRA standard of high quality and are indispensable components in any microwave project, such as microwave testing, and systems.

Results (Back to Back)



Drawing



Parameter	Inch (mm)	Parameter	Inch (mm)
A1	2.752 (69.9)	M	2.83 (72)
A2	3.874 (98.4)	N	2.526 (64.17)
B	2.29 (58.17)	O	0.5 (12.7)
C	1.145 (29.08)	P	0.5 (12.7)
D	0.25 (6.35)	S	0.375 (9.530)
E1	1 (25.4)		
E2	3.28 (83.3)		
F1	1.140 (54.36)		
F2	2.828 (71.82)		
G	0.236 (6)		
H	0.354 (9)		
I	0.5 (12.7)		
J	0.315 (8)		
K	1.381 (35.08)		
L	2.52 (64)		